



25 Meldan Street BURWOOD VIC

4 2 1

This comfortable family home is situated in a highly sought-after area within a short stroll to two tram lines, PLC, Deakin University, Wattle Park and golf course. On a corner allotment and offering excellent accommodation it comprises; entry, spacious lounge with fire place and polished floorboards, large kitchen with walk-in pantry opening to family/meals area, main bedroom with w.i.r. and ensuite with spa, 2 further bedrooms (b.i.r.s), 4th bedroom or study, family bathroom and laundry. Features garage with workshop, outdoor decking with built in gas BBQ, ducted heating, air conditioner and ceiling fans. Land size 16.15m x 37.18m (600m2 approx)

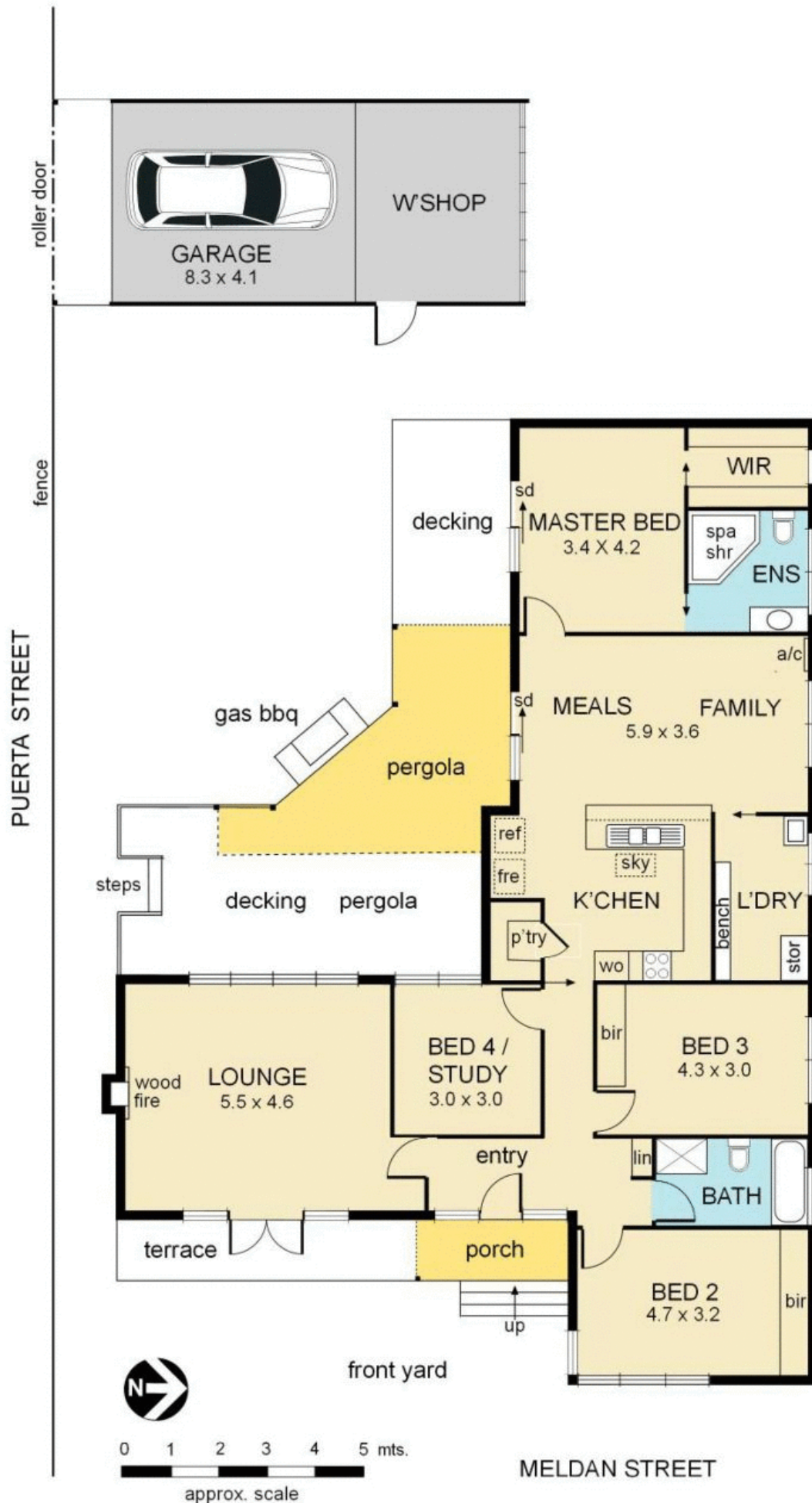
Type : House

View : <https://www.jacain.com.au/sale/vic/east/burwood/residential/house/7490846>



Bryan Cain
03 9805 2900

25 Meldan Street, Burwood



NB: all stated dimensions are approximate only
and should not be taken as definitive.