



16 Highfield Road CANTERBURY VIC

3 2 4

This quality character filled home is in superb condition throughout, and is close to train, tram, parks and Maling Road. With many charming period features, it comprises; attractive front verandah, large entry, exquisite formal lounge/dining with OFP, 3 bedrooms, kitchen leading to family/meals with OFP, bathroom, laundry, external games room, double garage, and in-ground pool. Features ducted heating, polished floorboards, air conditioning, high ceilings and picture rails. Land size 704m2 approx.

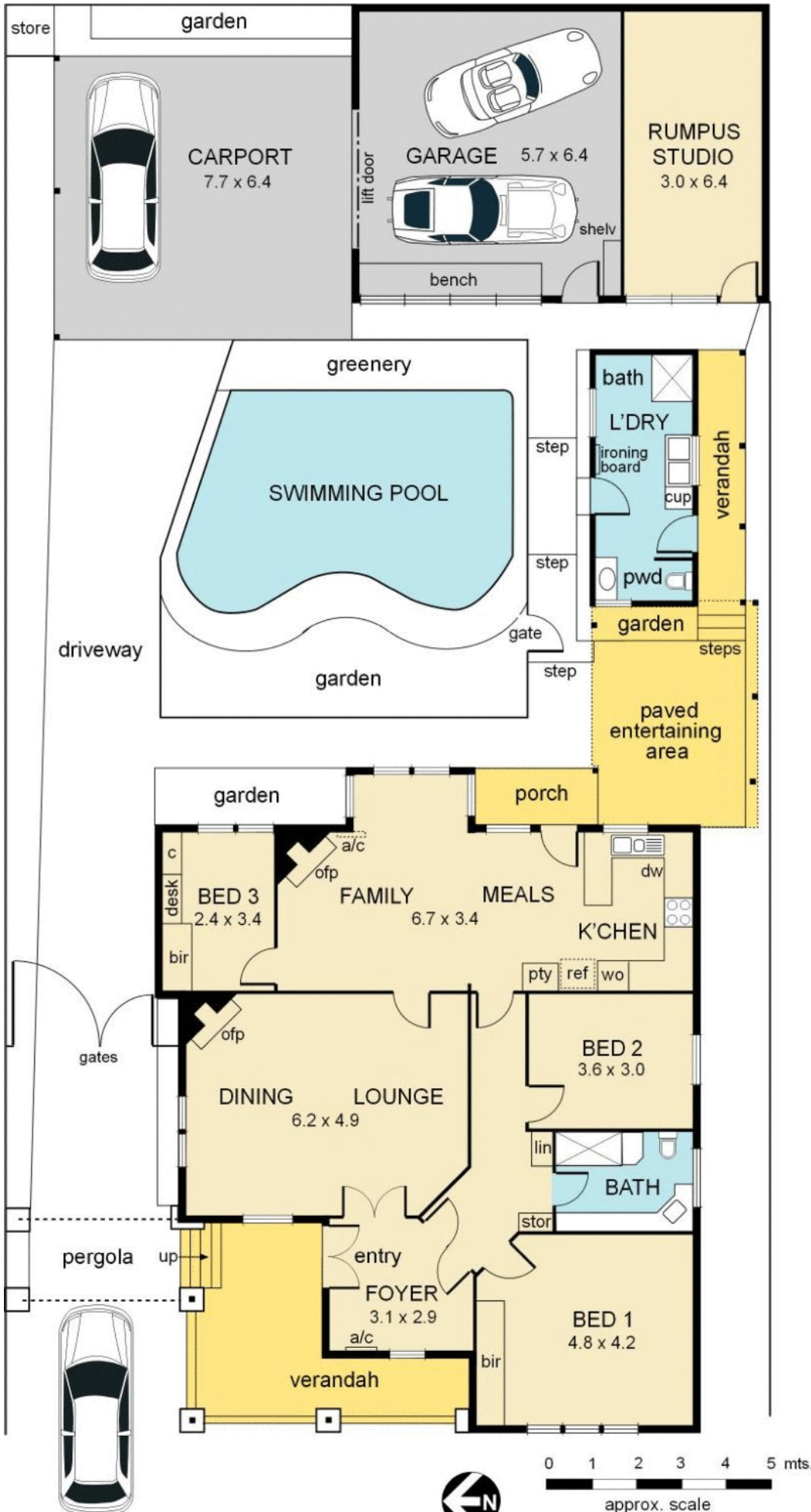
Type : House

View : <https://www.jacain.com.au/sale/vic/east/canterbury/residential/house/7490855>



Bryan Cain
03 9805 2900

16 Highfield Road, Canterbury



NB: all stated dimensions are approximate only and should not be taken as definitive.