



11 Warren Street BURWOOD VIC

4 2 3

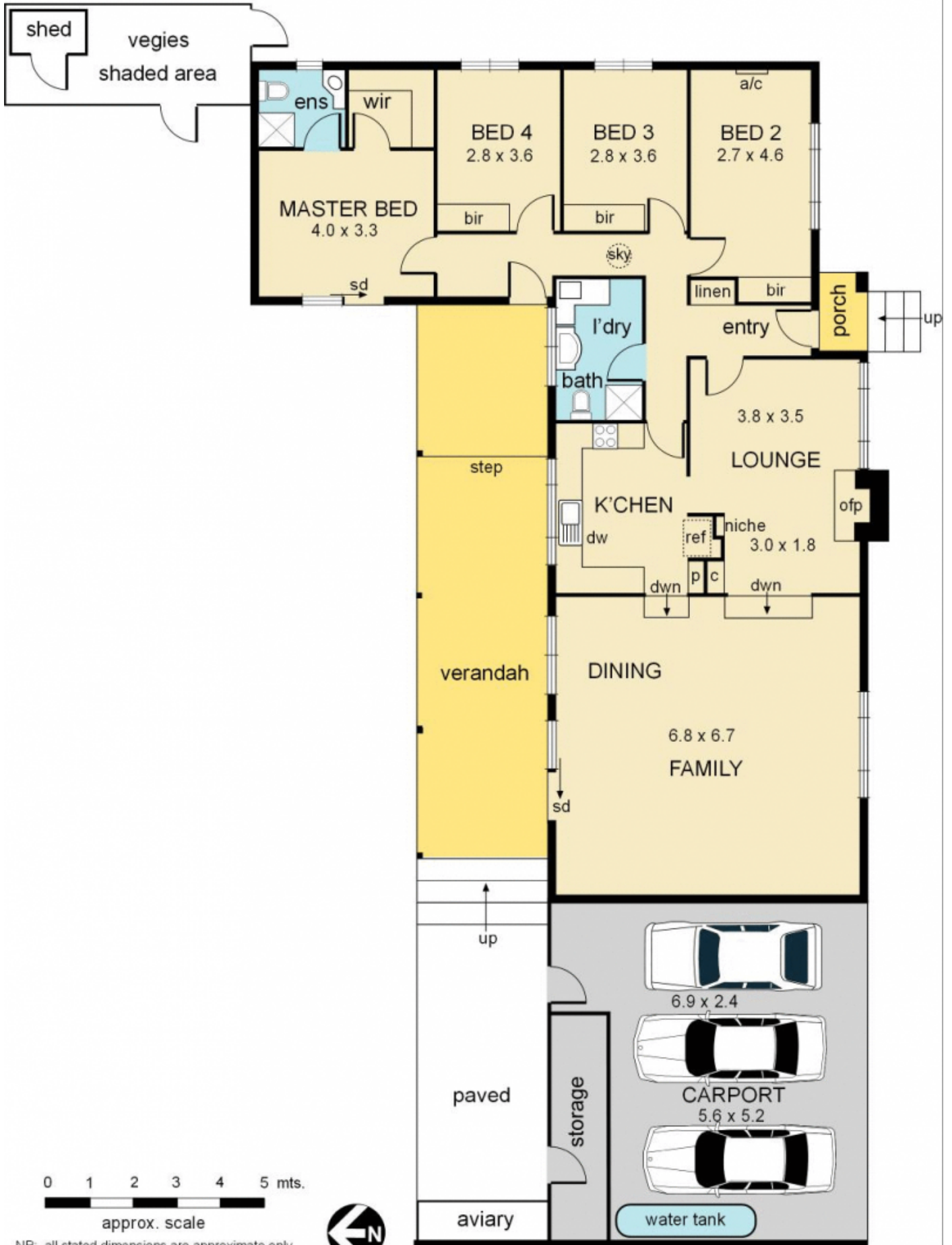
Occupying a wide frontage of 27.4mtrs approx with a highly coveted northern rear garden, this well presented 4 bedroom home offers a wealth of possibilities for the lucky buyer. The large block invites excellent development opportunities (STCA) for those looking to take full advantage of this prime residential site. Comprises; entry, lounge, sun filled kitchen, huge family/dining room, main bedroom with ensuite and w.i.r., 3 further bedrooms (b.i.r.s), bathroom with laundry. Features 2-3 car carport, ducted heating, air conditioner, plenty of storage, a water tank and a substantial rear garden. Located walking distance to tram, PLC, and Wattle Park Golf course, this an opportunity not to be missed. Land 27.4 x 27.2m (90' x 89'3") approx.

Type : House
Land Size : 745 sqm
View : <https://www.jacain.com.au/sale/vic/east/burwood/residential/house/7490883>



Bryan Cain
 03 9805 2900

11 Warren Street, Burwood



NB: all stated dimensions are approximate only and should not be taken as definitive.