



## 8 Streeton Court MONT ALBERT VIC

3 1 2

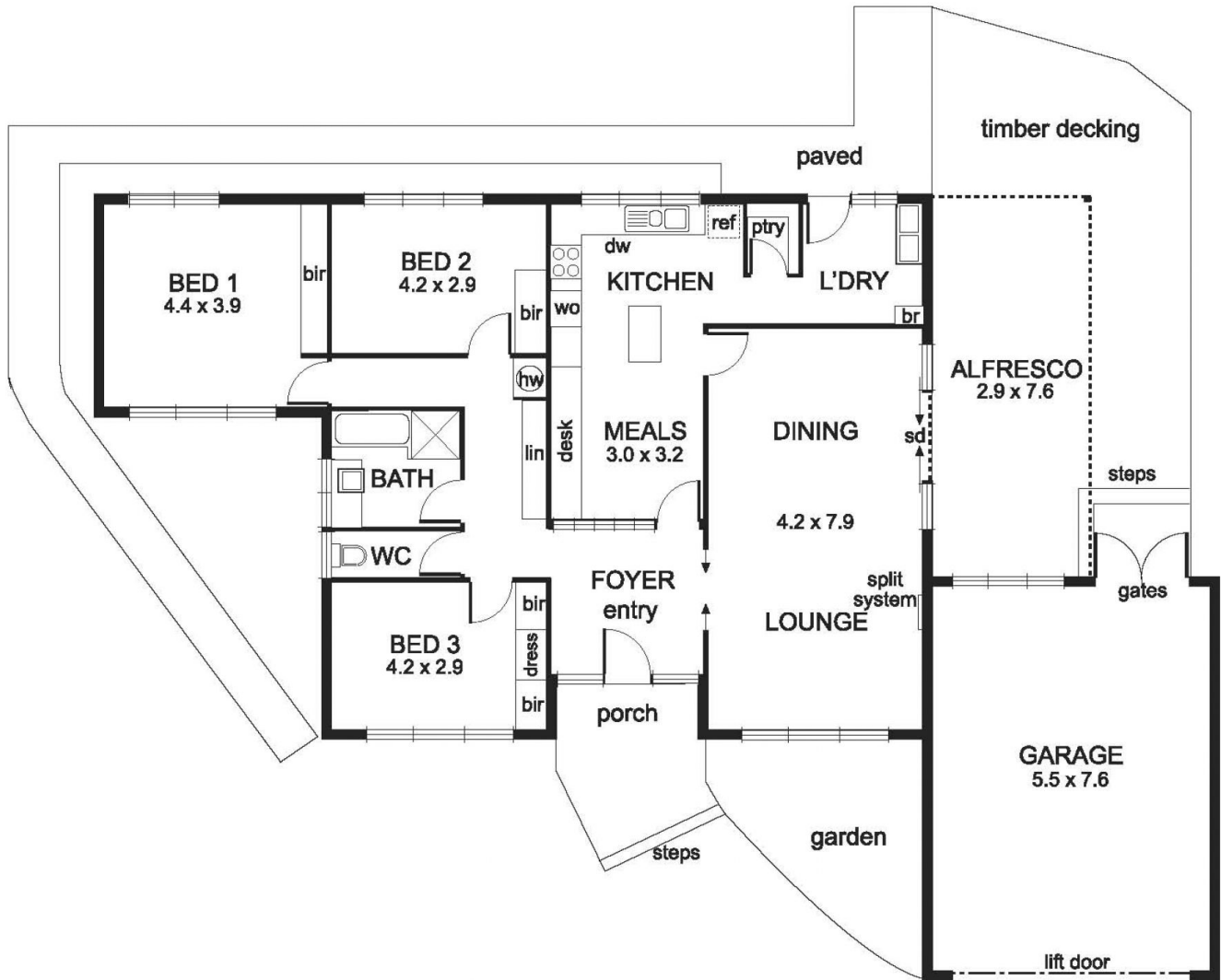
Located in a serene leafy court, this solid brick family residence enables an enviable lifestyle in a desirable pocket of Mont Albert close to prestige schools, Surrey Park Aqualink and Box Hill Shopping Centre, plus easy access to train and tram.

**Type** : House  
**Land Size** : 688 sqm  
**View** : <https://www.jacain.com.au/sale/vic/east/mont-albert/residential/house/7491012>

The practical and spacious interior proceeds from the entry foyer through to the living and dining room, which flows onto the large undercover outdoor deck, creating a fantastic sense of comfort and relaxation - perfect for year-round entertaining. Three bedrooms all with built in robes offer an abundance of accommodation, and the kitchen with adjoining meals area has plenty of cupboards, including a walk-in pantry. The bathroom, laundry and double garage complete the picture.

[For full version visit the website](https://www.jacain.com.au)

## 8 Streeton Court, Mont Albert



0 1 2 3 4 5 mts.

approx. scale

NB: All possible care is taken with measurements however it should be assumed that they are approximations and are not definitive

This plan is a guide only, not a detailed specification

Particulars herein are for information only and do not constitute representation by the Owner or Agent