

10 Berkeley Street HAWTHORN VIC

12 4 6

Scotch Hill's Finest Opportunity

One of the most exciting prospects to come available in the Scotch Hill precinct in recent times, is this unique property of unparalleled opportunity and alluring appeal.

Seldom is such a rare property offered in one of the premier streets of Melbourne's inner east which provides a myriad of options.

The property is being sold as a whole (with the added bonus of each unit having its own separate title).

Sited on 1236m2(approx.) of absolutely blue chip land, this superb property includes four spacious solid clinker brick

Type : House

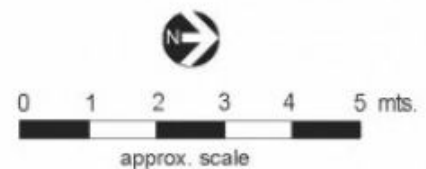
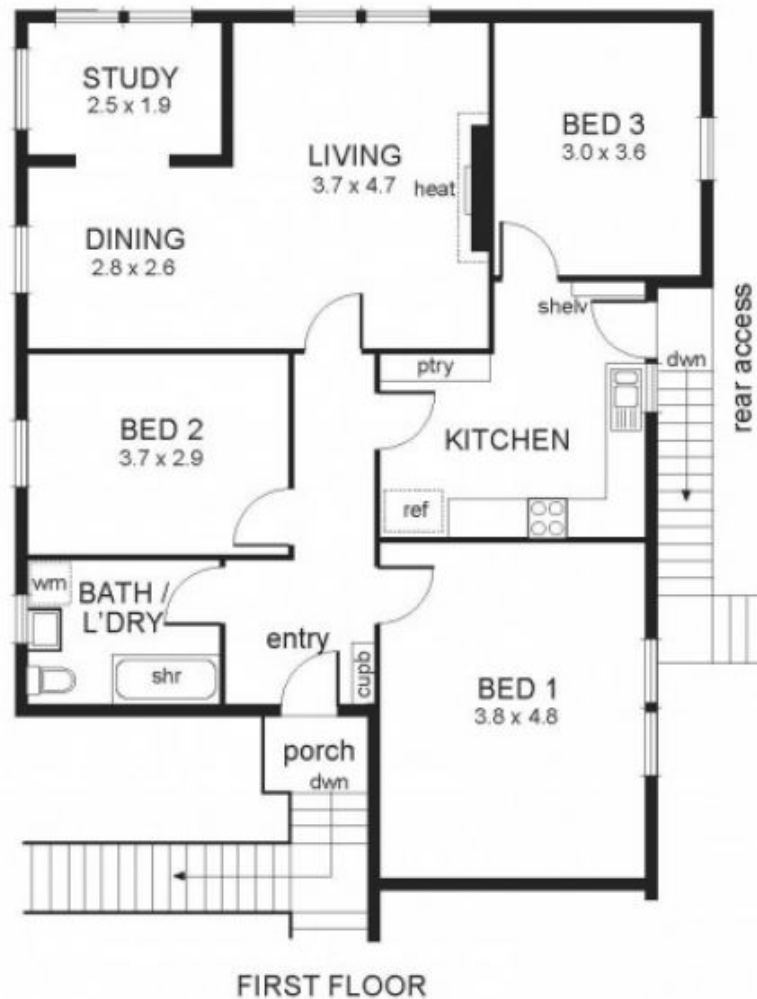
View : <https://www.jacain.com.au/sale/vic/east/hawthorn/residential/house/7491028>



Bryan Cain
03 9805 2900

[For full version visit the website](https://www.jacain.com.au)

4 / 10 Berkeley Street, Hawthorn



NB: All possible care is taken with measurements
however it should be assumed that they are
approximations and are not definitive

This plan is a guide only, not a detailed specification

1- 4 / 10 Berkeley Street, Hawthorn

