



## 225A Highfield Road CAMBERWELL VIC

4 2 2

Architecturally designed and built by a master builder and set well back from Highfield Road this stunning town residence offers exemplary low maintenance living within serene surrounds.

An effortless lifestyle of elegance is easily achieved through the open plan living and dining zones which are adorned with spotted gum flooring and greet the sparkling Caesarstone and European appliance kitchen perfectly. The Master bedroom situated downstairs is equipped with walk in robe and ensuite plus a 4th bedroom or study provides further options. Upstairs two large bedrooms (built in robes) are serviced by a central bathroom.

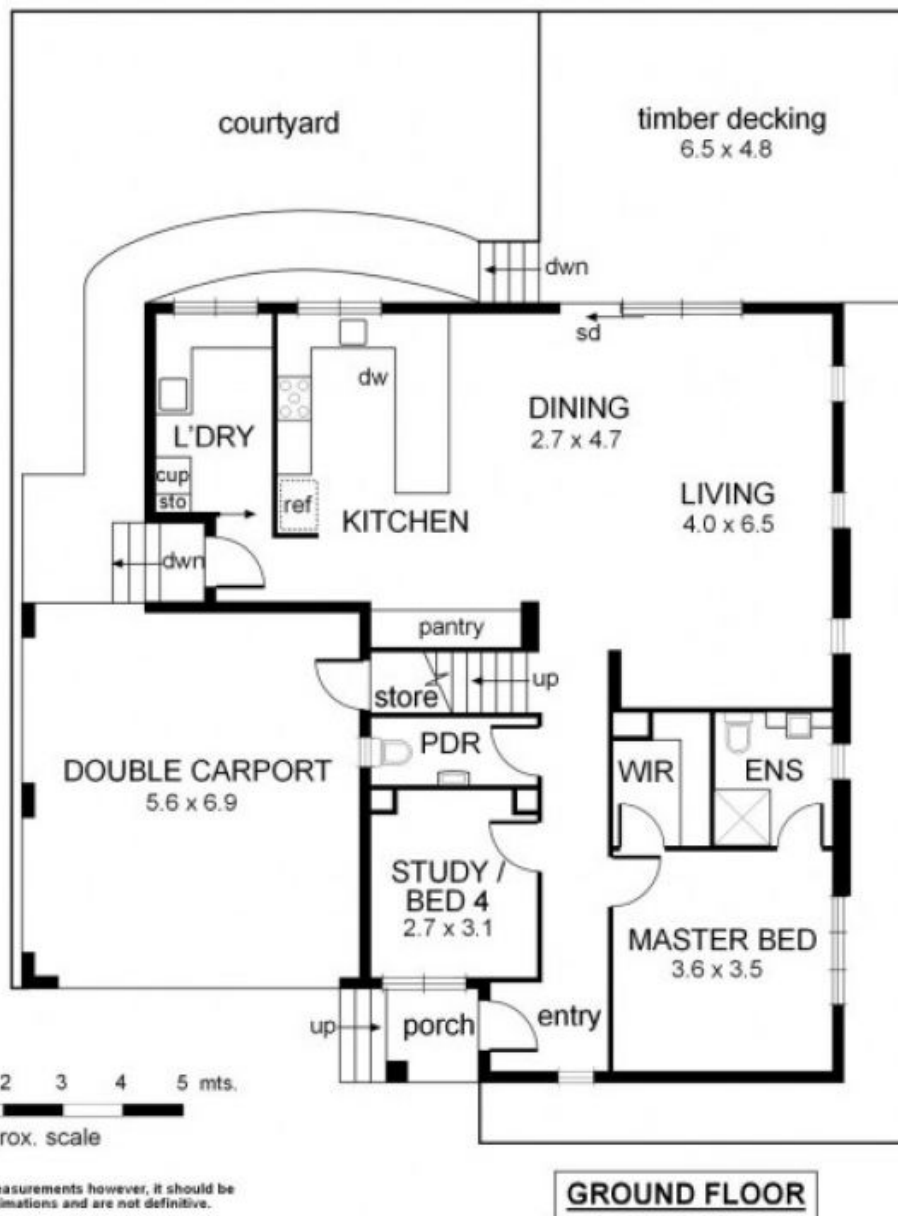
Exterior areas of pure delight include expansive decked entertaining area with peaceful outlooks, rear courtyard and oversized double carport with storage.

**View :** <https://www.jacain.com.au/sale/vic/east/camberwell/residential/house/7491044>



**Chris Cain**  
03 9805 2900

# 225A Highfield Road Camberwell



0 1 2 3 4 5 mts.  
approx. scale

NB: All possible care is taken with measurements however, it should be assumed that they are approximations and are not definitive.

This plan is a guide only, not a detailed specification