



17 Kay Street MOUNT WAVERLEY VIC

3 2 2

Located in one of the most desired pockets of the suburb with the street adjoining Damper Creek Reserve and offering the ability to walk to Mount Waverley Secondary College and public transport options.

This valuable parcel of land consisting of 754m² is primed for a multitude of options, including; renovation and refurbishments, demolition, development or a perfect brand new home site.

Elevated in position, the existing building consists of 3 bedrooms, lounge and separate dining room, kitchen and meals area, two bathrooms, additional rear family room plus study, double garage and large storage room.

Type : House

View : <https://www.jacain.com.au/sale/vic/east/mount-waverley/residential/house/7491087>



Chris Cain
03 9805 2900

[For full version visit the website](https://www.jacain.com.au)

17 Kay Street Mount Waverley



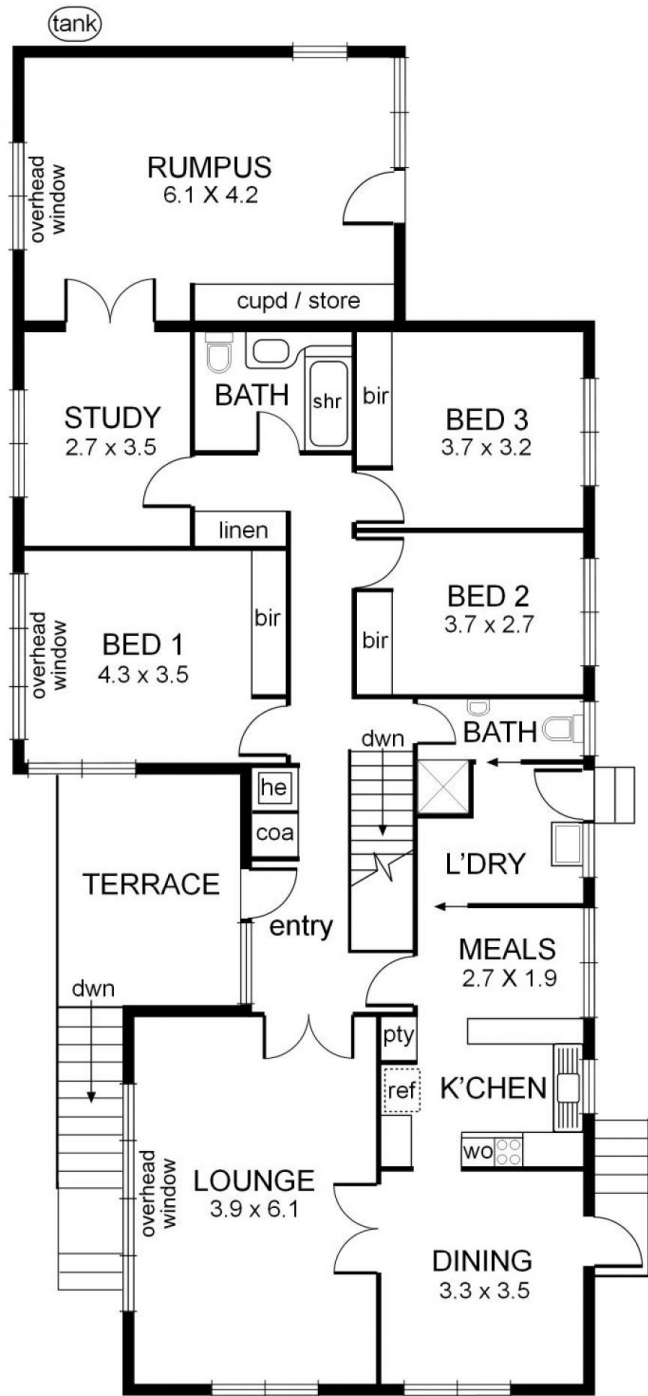
0 1 2 3 4 5 mts.



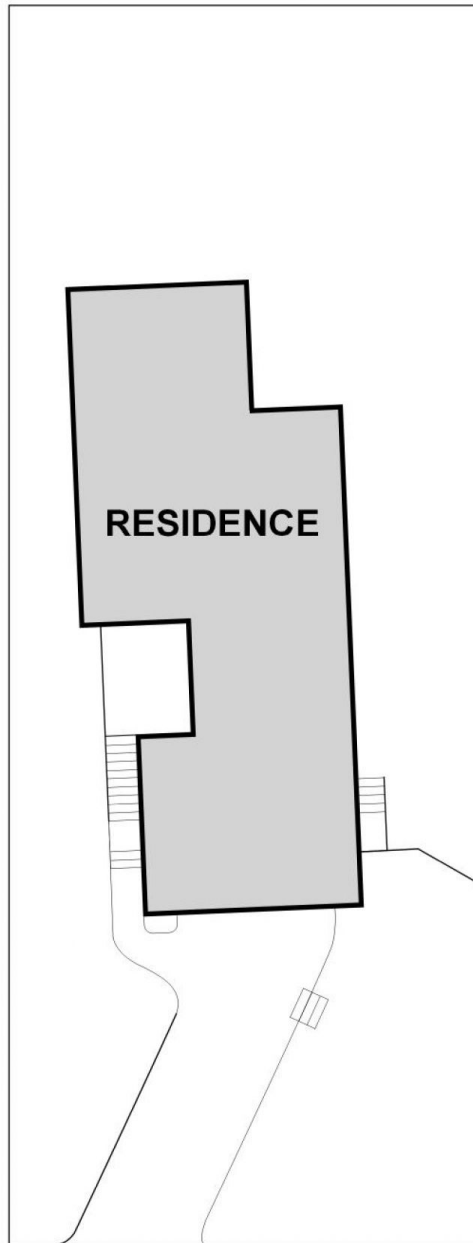
approx. scale

NB: All possible care is taken with measurements however it should be assumed that they are approximations and are not definitive

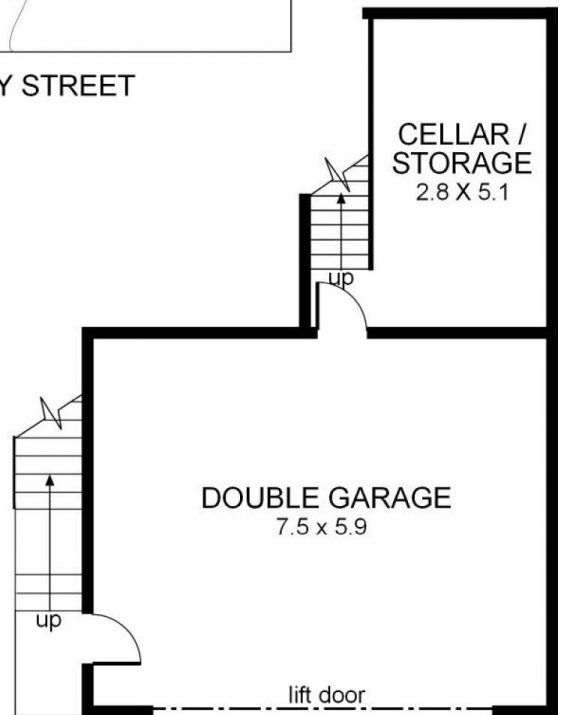
This plan is a guide only, not a detailed specification



UPPER FLOOR



KAY STREET



LOWER FLOOR

Particulars herein are for information only and do not constitute representation by the Owner or Agent