



30 Jubilee Street MOUNT WAVERLEY VIC

3 1 1

Well presented and cared for over many decades by the same owner, this original brick veneer family residence allows the opportunity to move straight in or add modern refurbishments to a property bound for prosperous future.

Extensive front and rear yards on a sizeable block of land, including a wide 17m frontage, offer possibilities of extension and landscaping to further enhance this quality property.

The flexible floorplan comprising formal and informal living zones includes front lounge and dining with additional family area at the rear adjacent to kitchen. Three bedrooms are serviced by main bathroom with separate laundry concluding the interior. Outdoors are complemented by

Type : House

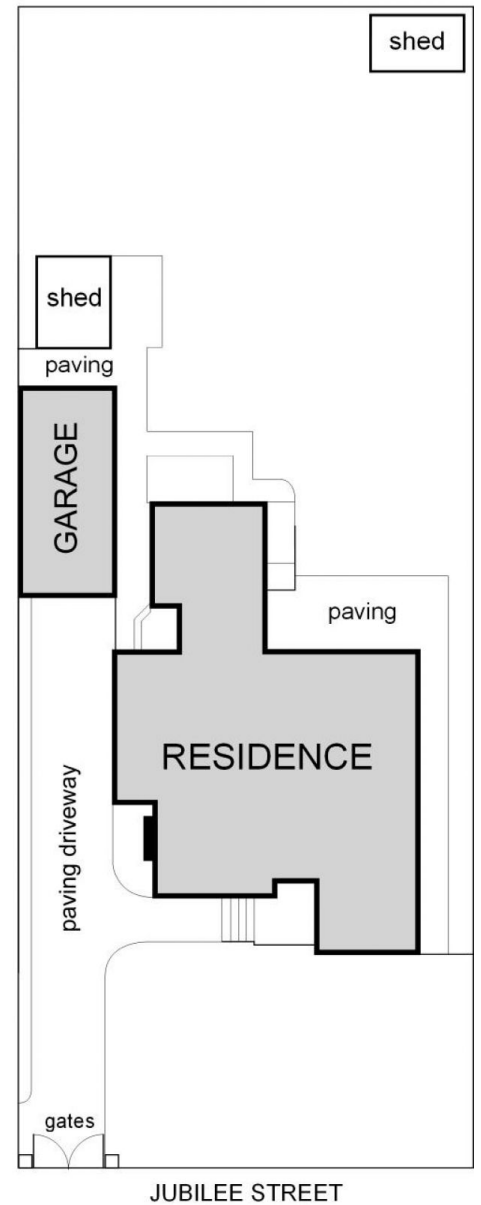
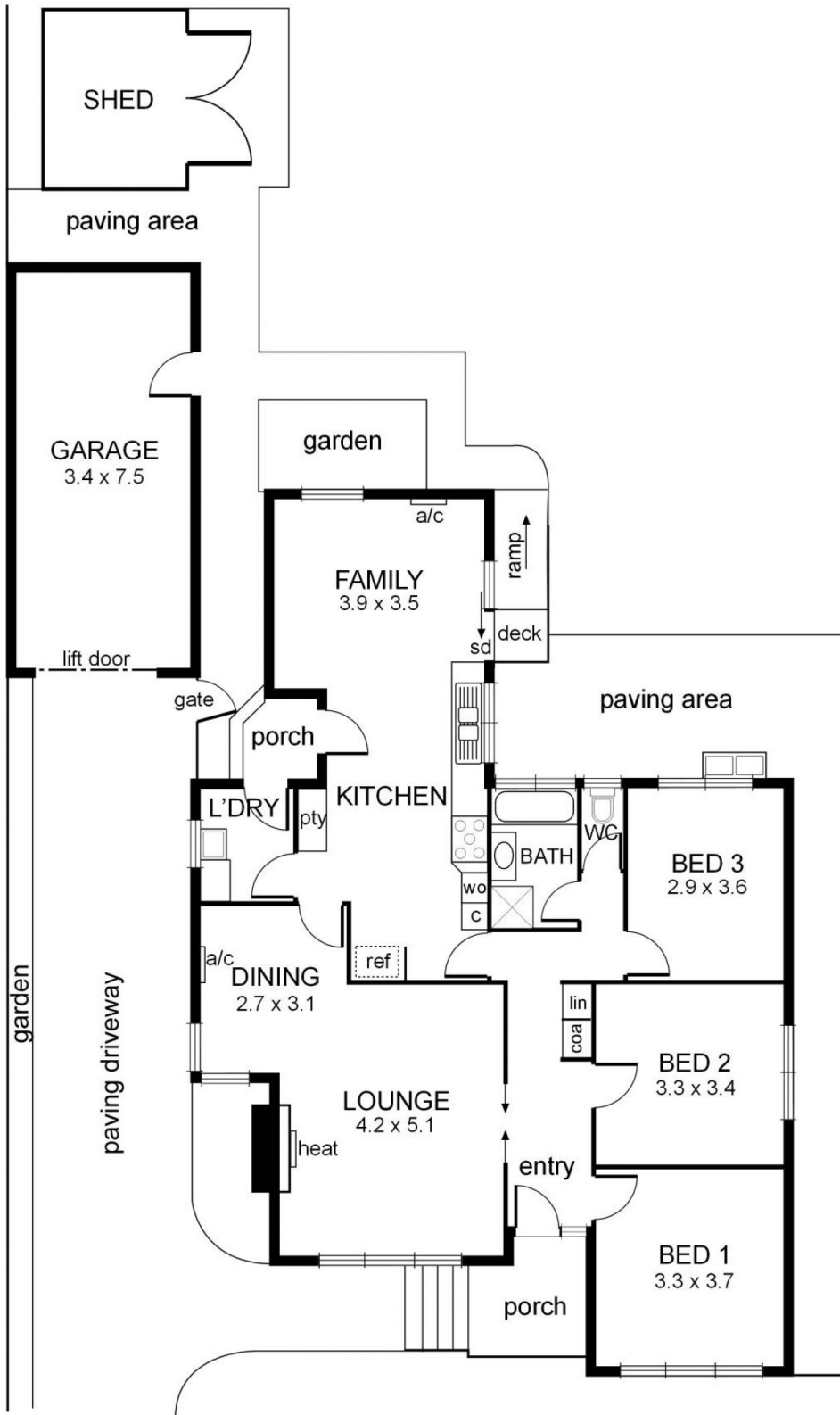
View : <https://www.jacain.com.au/sale/vic/east/mount-waverley/residential/house/7491092>



Chris Cain
03 9805 2900

[For full version visit the website](https://www.jacain.com.au)

30 Jubilee Street Mount Waverley



0 1 2 3 4 5 mts.



approx. scale

NB: All possible care is taken with measurements however it should be assumed that they are approximations and are not definitive

This plan is a guide only, not a detailed specification

Particulars herein are for information only and do not constitute representation by the Owner or Agent