



42 Martin Road GLEN IRIS VIC

3 2 2

A desired destination in this leafy street, only moments to Ferndale or Nettleton Park, Burke Rd tram, Gardiner station and Tooronga Village, this rare single level residence is sited on a low maintenance garden allotment and provides modern touches alongside quality open spaces.

Privacy is assured through established flora and delightful front lawns which are accompanied by multiple courtyards, including north facing entertaining area. Internal living zones comprise of lounge room with adjoining dining that are adorned with new carpets and benefit from side porch and courtyard access. Open plan kitchen and informal north facing family area offer additional options with ample accommodation through three double bedrooms (built in

Type : House

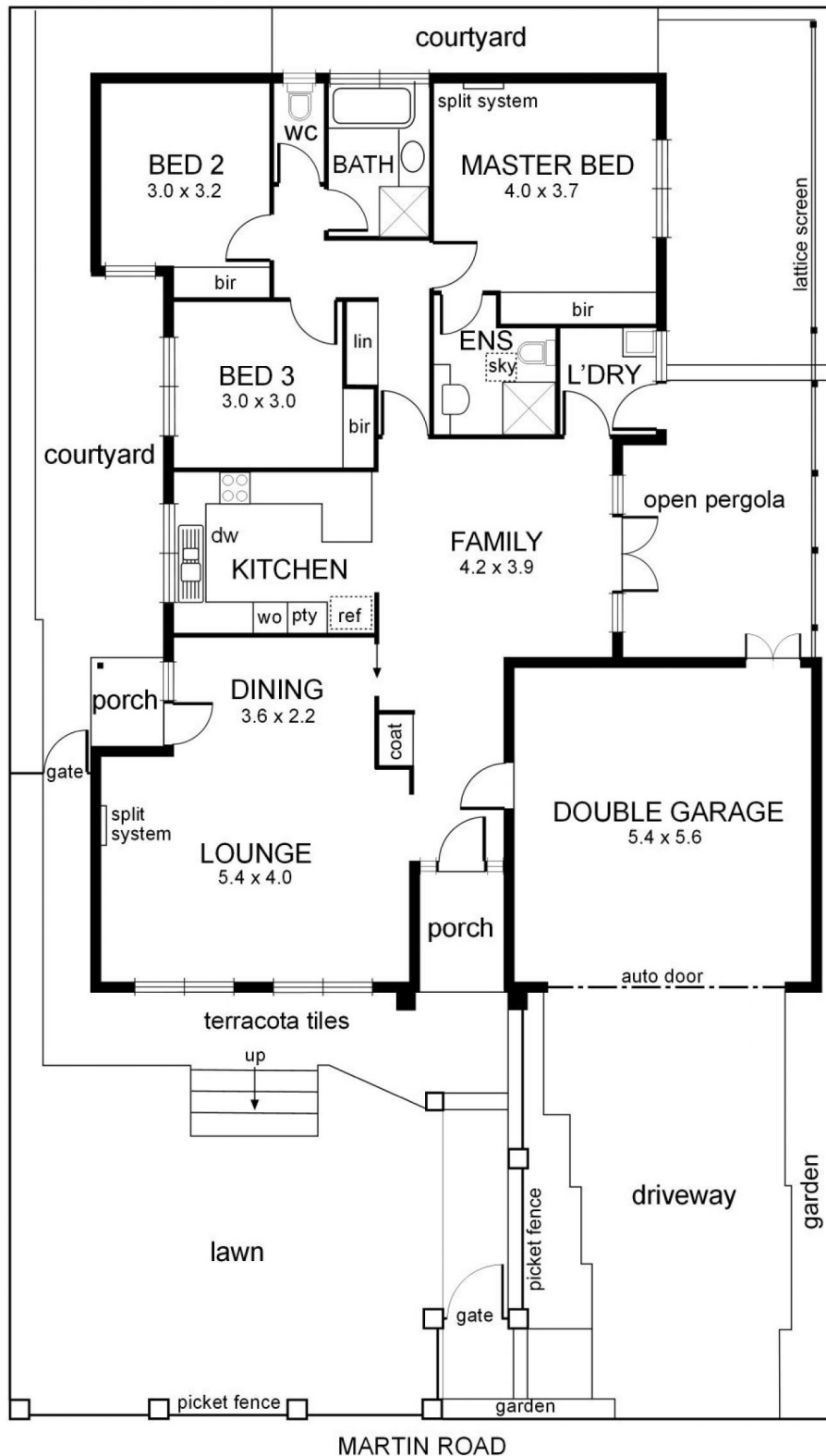
View : <https://www.jacain.com.au/sale/vic/east/glen-iris/residential/house/7491095>



Chris Cain
03 9805 2900

[For full version visit the website](https://www.jacain.com.au)

42 Martin Road Glen Iris



0 1 2 3 4 5 mts.



approx. scale

NB: All possible care is taken with measurements however it should be assumed that they are approximations and are not definitive

This plan is a guide only, not a detailed specification