



## 63 Russell Street SURREY HILLS VIC

3 1 2

Occupying an imposing elevated position on the high side of this delightful tree lined street, this superb brick veneer family residence has been meticulously maintained and is ready for the astute next owner to move in or add their own personal flair to what is already an impressively sized property. The pristine interior encompasses entrance hall, three double bedrooms, all with built in robes, large lounge and separate dining room which opens onto extensive terrace. Original kitchen enjoys adjoining family room with bathroom, separate laundry and double garage placed at the rear. Includes ducted heating and split system air con., quality carpets and open fire place.

A location only moments to Wattle Park, Union Road shopping and transport plus the added bonus of a

**Type** : House

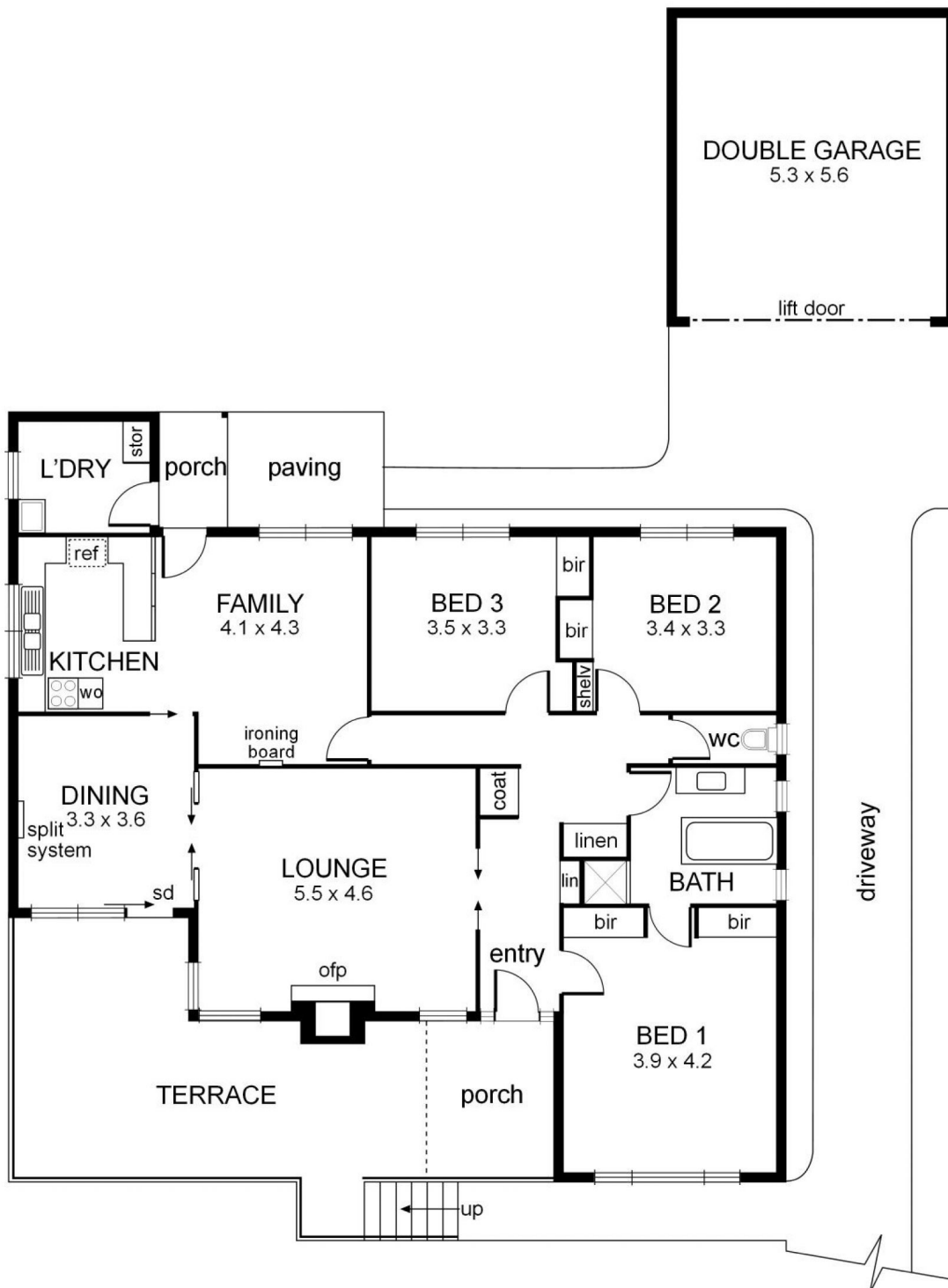
**View** : <https://www.jacain.com.au/sale/vic/east/surrey-hills/residential/house/7491096>



**Chris Cain**  
03 9805 2900

[For full version visit the website](https://www.jacain.com.au)

# 63 Russell Street Surrey Hills



0 1 2 3 4 5 mts.

approx. scale

NB: All possible care is taken with measurements  
however it should be assumed that they are  
approximations and are not definitive

This plan is a guide only, not a detailed specification