



10 Laura Grove MOUNT WAVERLEY VIC

4 2 2

Located in a quiet and peaceful street only moments from Mount Waverley Village shopping centre, Valley Reserve and within the Mount Waverley Secondary College Zone, this quality single level with an extra wide frontage of 18.6m (approx.) provides a number of premier options to ensure a prosperous future.

The expansive floorplan comprises entrance hallway, large formal lounge with open fire place and adjoining dining area which are complement by additional living room. Kitchen with dishwasher and plenty of cupboard space enjoys a meals area with separate laundry and easy external access. An abundance of accommodation is provided through four bedrooms (all with built in robes), ensuite and main bathroom with spa and separate shower. Carport, garage and multiple storage areas an added

Type : House

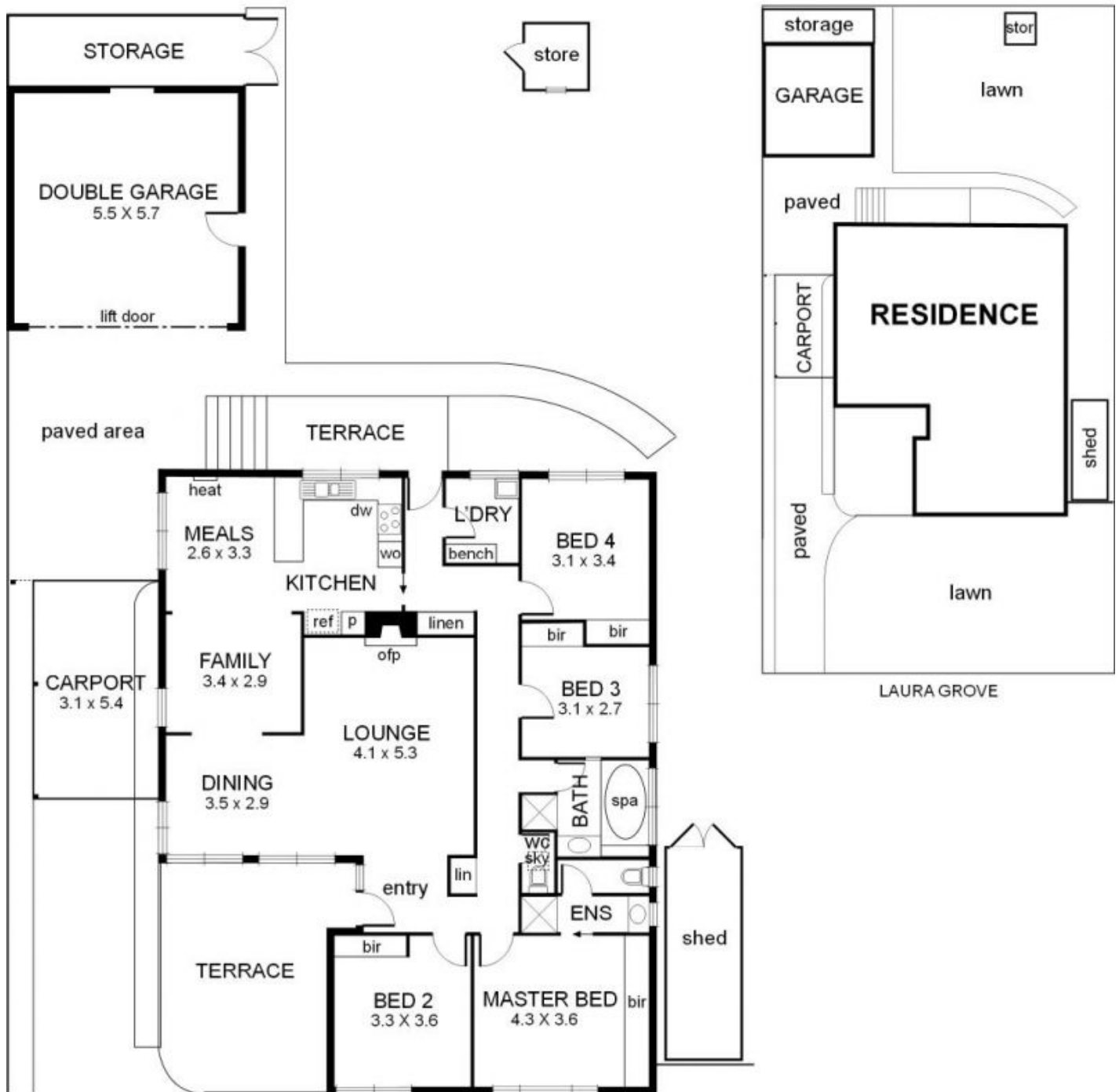
View : <https://www.jacain.com.au/sale/vic/east/mount-waverley/residential/house/7491117>



Chris Cain
03 9805 2900

[For full version visit the website](https://www.jacain.com.au)

10 Laura Grove Mount Waverley



0 1 2 3 4 5 mts.

approx. scale

NB: All possible care is taken with measurements however it should be assumed that they are approximations and are not definitive

This plan is a guide only, not a detailed specification

Particulars herein are for information only and do not constitute representation by the Owner or Agent