



1 Beryl Street GLEN IRIS VIC

3 2 1

This solid brick Californian Bungalow of the 1920's immediately confirms the features of this desired era are an alluring attraction. Sited on 723m² with a wide 18m frontage, the property has been meticulously maintained throughout and the modern refurbishments and extensions have remained consistent with its origins to present a perfect family home which is a testament to its precise craftsmanship and proud history.

Captivating colour schemes create a warm ambience amongst many enticing characteristics including; decorative high ceilings, lead light windows, picture rails, pine floorboards and multiple open fire places etc.

Marvellous entrance hall surrounded by stained timber work opens through double doors to formal lounge with views over the charming front verandah and lush gardens. Open plan living and dining adjacent to gourmet kitchen includes walk in pantry with sub-floor cellar. Bedding

Land Size : 723 sqm

View : <https://www.jacain.com.au/sale/vic/east/glen-iris/residential/house/7491119>

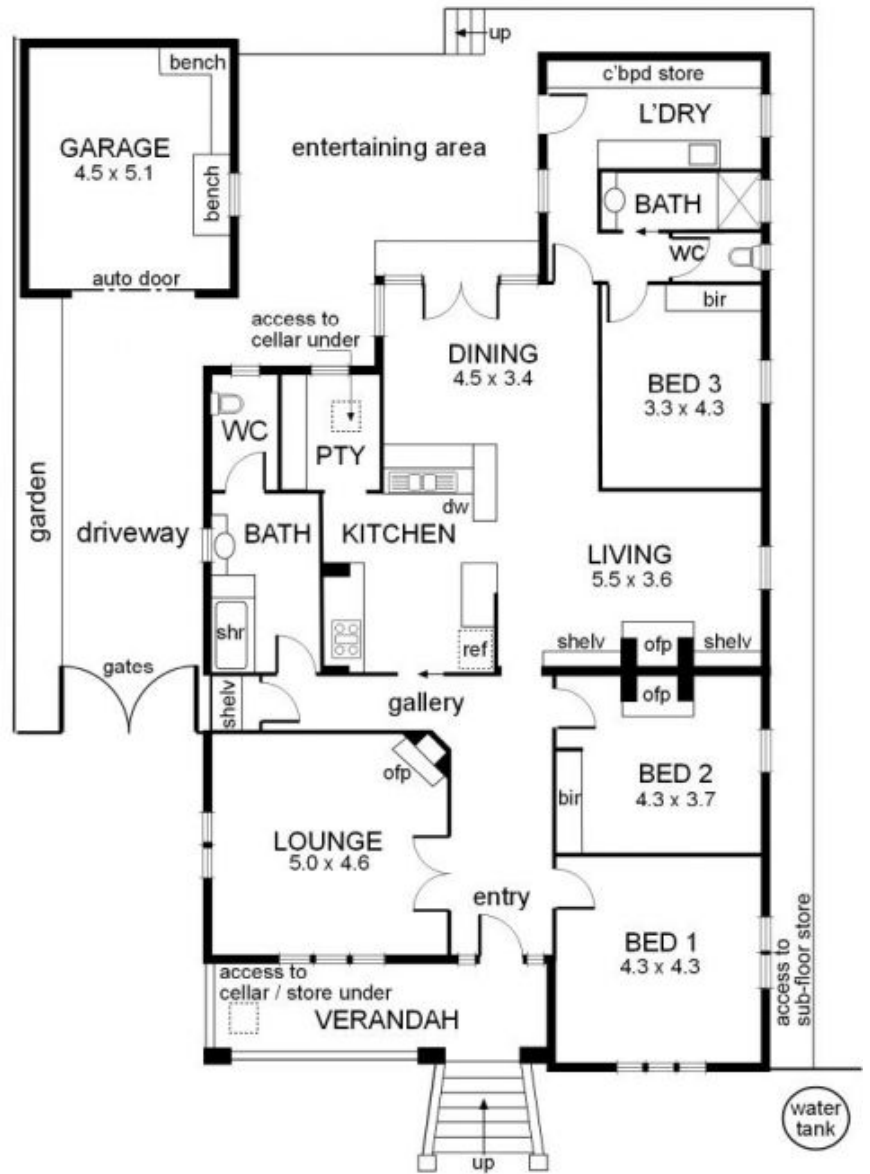


Chris Cain
03 9805 2900

1 Beryl Street Glen Iris



BERYL STREET



0 1 2 3 4 5 mts.
approx. scale

NB: All possible care is taken with measurements however it should be assumed that they are approximations and are not definitive

This plan is a guide only, not a detailed specification