



## 6 Watson Street GLEN IRIS VIC

5 3 3

Occupying the imposing corner of Watson and Irvine Street this grand residence has been designed and delivered to ensure a lifestyle of luxury and comfort at an elite level. Impressive proportions and impeccable finishes create an environment of pure class with exceptional liveability in a family friendly location only moments to Ferndale Park

Pristine entrance and manicured gardens lead into expansive hallway which immediately identifies the quality and space provided with such an executive residence. Downstairs; formal lounge with balcony, striking kitchen with open plan dining and living zones with gas log fireplace and access to extensive undercover decked entertaining area. Guest master bedroom with walk in robe an ensuite plus separate study room, powder room and

**Type** : House

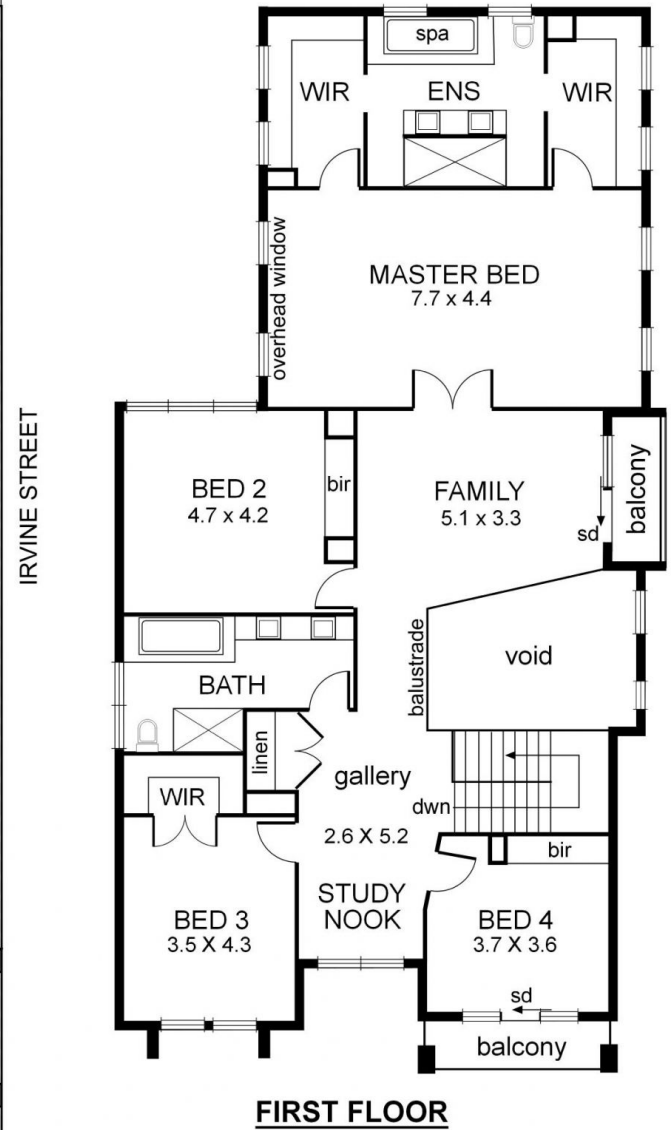
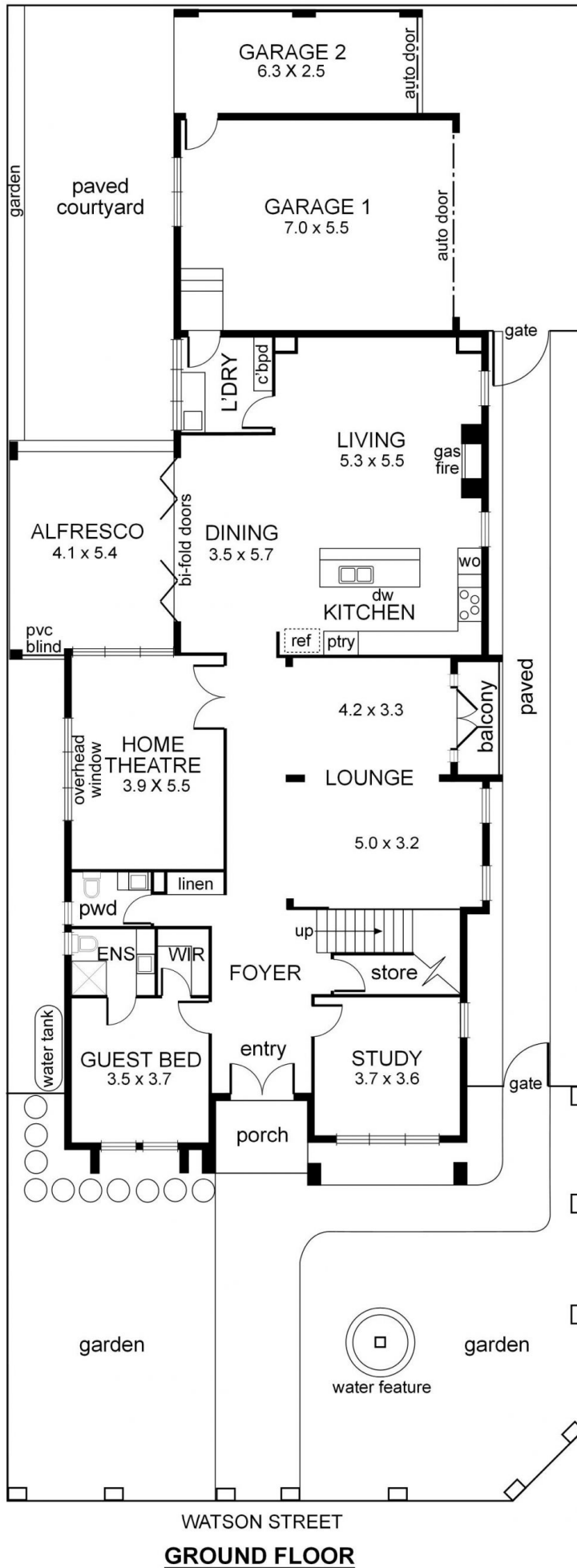
**View** : <https://www.jacain.com.au/sale/vic/east/glen-iris/residential/house/7491131>



**Chris Cain**  
03 9805 2900

[For full version visit the website](https://www.jacain.com.au)

# 6 Watson Street Glen Iris



0 1 2 3 4 5 mts.  
approx. scale

NB: All possible care is taken with measurements however it should be assumed that they are approximations and are not definitive

This plan is a guide only, not a detailed specification