



1002/480 St Kilda Road Melbourne VIC

3  2  2 

This is your opportunity to secure this amazing property on the 10th floor of the Metropolis, one of Melbourne's finest apartment complexes.

This deluxe property has some of the best views in Melbourne overlooking Fawkner Park and then further to the Dandenong ranges.

This outstanding corner apartment impresses from the outset with its large floor to ceiling windows enhancing these magnificent views. The huge living room with balcony adjoins the dining room and kitchen, the master bedroom includes a study, built in robes and large ensuite, two more bedrooms both with built in robes and central bathroom with bath complete this excellent floorplan. Further features of this apartment include European appliances, stone

**Type** : Apartment

**View** : <https://www.jacain.com.au/sale/vic/inner-city/melbourne/residential/apartment/8066221>



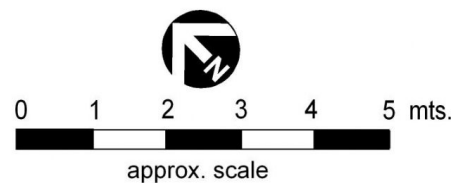
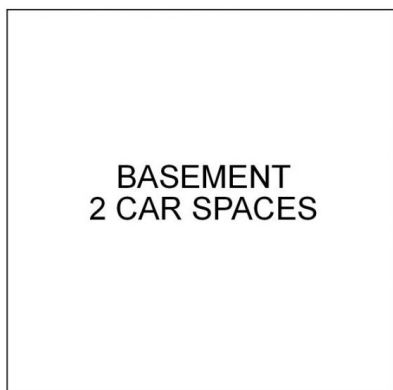
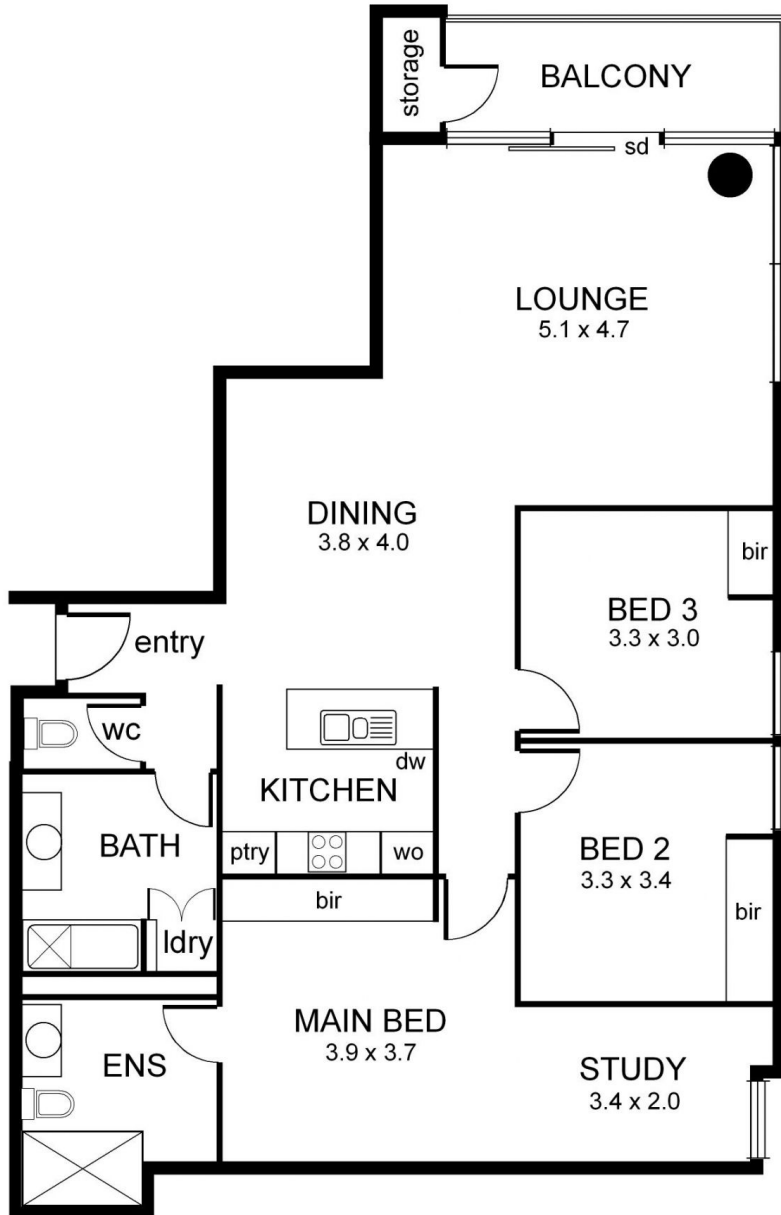
**Chris Cain**  
03 9805 2900



**Bryan Cain**  
03 9805 2900

[For full version visit the website](https://www.jacain.com.au)

# 1002/480 St Kilda Road Melbourne



NB: All possible care is taken with measurements however it should be assumed that they are approximate and are not definitive, and no liability will be accepted for any misinformation.

This plan is a guide only, not a detailed specification